



CERTIFIED PROTECTION

Since the beginning of its activity in the Explosion Proof Sector several years ago, SUPERMEC invested many resources into formation of their technical and commercial staff and it is now recognized as one of the major expert of South East Asia in this field, organizing dedicated seminars and updating their customers to the latest Exproof Standards.

SUPERMEC is actually certified by international recognized Bodies for ISO 9001:2008 and OHSAS 18001:2007 and its manufacturing sites and its range of ex-proof equipment are also certified in conformity to the latest ATEX and IEC-Ex Standards.



CUSTOM MADE

“Be GLOCAL” has been always the SUPERMEC working philosophy.

Having a GLOBAL presence avoids to think and develop a product and service only for local requirements.

Having a LOCAL presence, our dedicated and well-trained staff are able to assist in customer requirements and solve their problems and providing the best possible interface.

Being GLOCAL, SUPERMEC is able to support directly and through its regional subsidiaries, the customers in the special execution like switchracks and panel boards in Ex-proof execution.

The design and the construction of these panels are custom-made locally with a continued interchange of information between Supermec and Clients till the final result is fully satisfactory.

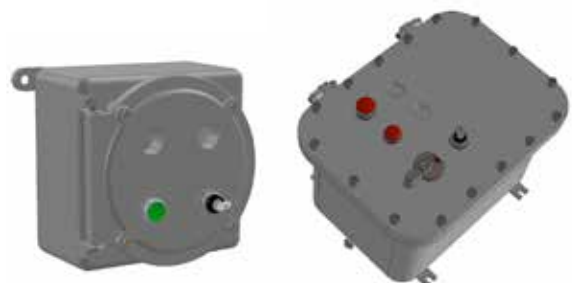
Last but not least, the complete assurance for the clients that these special executions have been made in accordance with the Standards and within the limits of certification, under the full supervision and control of the manufacturer.

SERVICE & SUPPORT

SUPERMEC understands the importance of a clear and correct information of its range of products to the market.

Together with the daily support of its Technical and Commercial Staff, SUPERMEC provides to the customers a complete and detailed technical documentation available both in paper and digital format so to match the traditional approach with the more efficient and complete electronic system.

Supermec trusts web-based communications specially because of opportunity to grant always updated data and higher volume of information together with the possibility to use new working instruments like video-instructions and electronic handbooks available also through small devices.





EJB A

Aluminium Ex d Panel Boards

Enclosures are available in different sizes mainly used for the following applications: control station, motor starter, lighting control panel, instrument housing, etc.

Material: marine aluminium - epoxy coated RAL 7001

Protection: II 2GD - Ex d e [ia/ib] IIB+H2 - Ex tb IIIC - IP66

Zone: 1 - 2 - 21 - 22

EJB S

Stainless Steel Ex d Panel Boards

Enclosures are available in different sizes mainly used for the following applications: control station, motor starter, lighting control panel, instrument housing, etc.

Material: stainless steel AISI 316

Protection: II 2GD - Ex d e [ia/ib] IIB+H2 - Ex tb IIIC - IP66

Zone: 1 - 2 - 21 - 22



GUBA A

Aluminium Ex d Control Stations

Enclosures are available in different sizes mainly used for the following applications: control station, motor starter, lighting control panel, instrument housing, etc.

Material: marine aluminium - epoxy coated RAL 7001

Protection: II 2GD - Ex d e [ia/ib] IIC - Ex tb IIIC - IP66

Zone: 1 - 2 - 21 - 22

GUBA S

Stainless Steel Ex d Control Stations

Enclosures are available in different sizes mainly used for the following applications: control station, motor starter, lighting control panel, instrument housing, etc.

Material: stainless steel AISI 316

Protection: II 2GD - Ex d e [ia/ib] IIC - Ex tb IIIC - IP66

Zone: 1 - 2 - 21 - 22



EJB/GUB - ECS

Aluminium or Stainless Steel Ex d Earthing Control Systems

The Earthing Control System can be housed inside an EJB or GUB enclosure. It is complete with earthing clamp. The electronic unit is available with capacitive or capacitive-resistive control system.

Material: marine aluminium RAL 7001 or stainless steel AISI 316

Protection: II 2GD - Ex d [ia] IIB+H2/IIC - Ex tb IIIC - IP66

Zone: 1 - 2 - 21 - 22



CSDC/CSDY

Aluminium Ex d Control Stations

Multipurpose enclosure can be fitted with a wide range of push-button units, selectors, pilot-lights and rotary switches with a wide range of command cam equipment.

Material: **marine aluminium - epoxy coated RAL 7001**

Protection: **II 2GD - Ex d IIC - Ex tb IIIC - IP66**

Zone: **1 - 2 - 21 - 22**

CSDC W/CSDY W

Aluminium Ex d Instrument Housings

Compact size housing can be equipped with a wide range of digital or analogue instruments such as voltmeters and ammeters. It can be also installed with photo-electrical lighting controls or digital video cameras.

Material: **marine aluminium - epoxy coated RAL 7001**

Protection: **II 2GD - Ex d IIC - Ex tb IIIC - IP66**

Zone: **1 - 2 - 21 - 22**



CSE P

GRP Ex ed Control Stations

Multipurpose enclosure can be fitted with a wide range of push-button units, selectors, pilot-lights, rotary switches and analogic or digital instruments.

Material: **GRP - glass reinforced polyester**

Protection: **II 2GD - Ex d e mb IIC - Ex tb IIIC - IP66**

Zone: **1 - 2 - 21 - 22**

CSE S

Stainless Steel Ex ed Control Stations

Multipurpose enclosure can be fitted with a wide range of push-button units, selectors, pilot-lights, rotary switches and analogic or digital instruments.

Material: **stainless steel AISI 316**

Protection: **II 2GD - Ex d e mb IIC - Ex tb IIIC - IP66**

Zone: **1 - 2 - 21 - 22**



CSE A

Aluminium Ex ed Control Stations

Multipurpose enclosure can be fitted with a wide range of push-button units, selectors, pilot-lights, rotary switches and analogic or digital instruments.

Material: **marine aluminium - epoxy coated RAL 7001**

Protection: **II 2GD - Ex d e mb IIC - Ex tb IIIC - IP66**

Zone: **1 - 2 - 21 - 22**



EJB A

Aluminium Ex d Junction Boxes

Enclosures are available in different sizes , mainly used for the following applications: terminal/bus-bars box, container for transformers, ballasts, zener barriers, etc.

Material: marine aluminium - epoxy coated RAL 7001

Protection: II 2GD - Ex d e [ia/ib] IIB+H₂ - Ex tb IIIC - IP66

Zone: 1 - 2 - 21 - 22

EJB S

Stainless Steel Ex d Junction boxes

Enclosures are available in different sizes, mainly used for the following applications: terminal/bus-bars box, container for transformers, ballasts, zener barriers, etc.

Material: stainless steel AISI 316

Protection: II 2GD - Ex d e [ia/ib] IIB+H₂ - Ex tb IIIC - IP66

Zone: 1 - 2 - 21 - 22



GUBA A/GUBW A

Aluminium Ex d Junction Boxes

Enclosures are available in different sizes, mainly used for the following applications: terminals/bus bars box, container for transformers, ballast, zener barriers, etc. With window cover (model GUBW) it's used to house large size of digital or analogic instruments.

Material: marine aluminium - epoxy coated RAL 7001

Protection: II 2GD - Ex d e [ia/ib] IIC - Ex tb IIIC - IP66

Zone: 1 - 2 - 21 - 22

GUBA S

Stainless Steel Ex d Conduit Boxes

Enclosures are available in different sizes, maily used for the following applications: terminals/bus bars box, container for transformers, ballast, zener barriers, etc..

Material: stainless steel AISI 316

Protection: II 2GD - Ex d e [ia/ib] IIC - Ex tb IIIC - IP66

Zone: 1 - 2 - 21 - 22



GUA A

Aluminium Ex d / Ex e Conduit Boxes

Enclosures are used as pulling or terminal box. Available with any combination of entries, up to four on side and one on bottom, to cover all the installation schemes.

Material: marine aluminium - epoxy coated RAL 7001

Protection: II 2GD - Ex d IIC - Ex e IIC - Ex tb IIIC - IP66

Zone: 1 - 2 - 21 - 22



CSE P

GRP Ex e Junction Boxes

Enclosures are available in different sizes , mainly used for the following applications: terminal and bus-bars box, container for batteries and control gears

Material: GRP - glass reinforced polyester

Protection: II 2GD - Ex e ia IIC - Ex tb IIIC - IP66

Zone: 1 - 2 - 21 - 22

CSE S

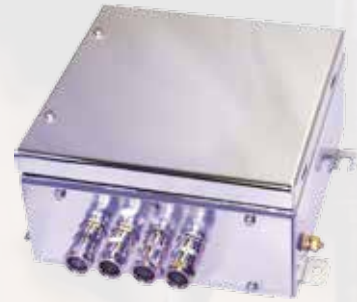
Stainless Steel Ex e Junction Boxes

Enclosures are available in different sizes , mainly used for the following applications: terminal and bus-bars box, container for batteries and control gears

Material: stainless steel AISI 316

Protection: II 2GD - Ex e ia IIC - Ex tb IIIC - IP66

Zone: 1 - 2 - 21 - 22



CSE A

Aluminium Ex e Junction Boxes

Enclosures are available in different sizes , mainly used for the following applications: terminal and bus-bars box, container for batteries and control gears

Material: marine aluminium - epoxy coated RAL 7001

Protection: II 2GD - Ex e ia IIC - Ex tb IIIC - IP66

Zone: 1 - 2 - 21 - 22

SWE/SWAE/SCE/PE

GRP Ex ed Plugs & Sockets

Plug and socket units are available from 16 to 125 Amp with different voltages. The connection between plug and socket is assured by an interlock system. The socket contacts are protected with a cover when unused. The plug can be joined to industrial socket installed in safe areas but the socket cannot be plugged with industrial one.

Material: GRP - glass reinforced polyester

Protection: II 2GD - Ex d e IIC - IP66

Zone: 1 - 21



BSC

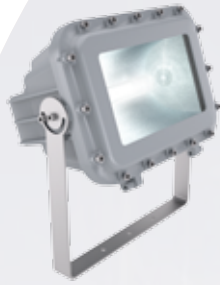
Stainless Steel Ex e Battery Container

Enclosures are available in different sizes, used as battery container for solar-power installations.

Material: stainless steel AISI 316

Protection: II 2G - Ex e IIC - IP44

Zone: 1 - 21



FLDE

Aluminium Ex de Floodlights

Floodlight with integrated control gear for high pressure sodium, metal halide and mercury vapours lamps up to 400W. It has wide beam symmetric reflector. The double entry present on the integrated terminal box allows loop-in loop-out installation.

Material: marine aluminium - epoxy coated RAL 7001

Protection: II 2GD - Ex d e IIB - Ex tb IIIC - IP66

Zone: 1 - 2 - 21 - 22

FLDE - LED

Aluminium Ex de LED Floodlights

LED Floodlight can be equipped with optics of different angles to provide a proper illumination of the areas. The angles available are: 10° (narrow) 20° (medium) and 40° (wide) to satisfy any standard requirements. The power unit and the connection box (loop-in loop-out facility) are integrated but have two separate access to facilitate the maintenance.

Material: marine aluminium - epoxy coated RAL 7001

Protection: II 2GD - Ex d e IIB - Ex tb IIIC - IP66

Zone: 1 - 2 - 21 - 22



CSDC - LED

Aluminium Ex d LED Spotlights

LED Spotlight with integrated control gear for illumination of small defined areas or for emergency lighting systems. The two entries allow any loop-in loop-out installation. An adjustable double-angle support is available for fixing it.

Material: marine aluminium - epoxy coated RAL 7001

Protection: II 2GD - Ex d IIC - Ex tb IIIC - IP66

Zone: 1 - 2 - 21 - 22

FLN

Aluminium Ex nR Floodlights

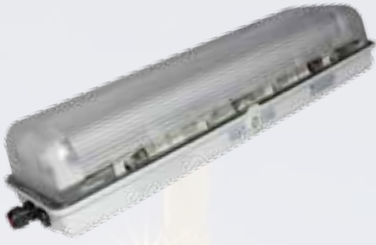
Floodlight with integrated control gear for high pressure sodium, metal halide lamps up to 400W. It has wide beam symmetric reflector. The double entry present on the body allows loop-in loop-out installation.

Material: marine aluminium - epoxy coated RAL 7001

Protection: II 3GD - Ex nR II - Ex tc IIIC - IP66

Zone: 2 - 22





LFE

GRP Ex ed Fluorescent Lighting Fixtures

Fluorescent lighting fixture is available with single and double tube configuration and two sizes: 14 or 18W and 28 or 36W. The double entry present on each side allows any loop-in loop-out installation. Material: GRP - glass reinforced polyester

Protection: II 2GD - Ex d e mb q IIC - Ex tb IIIC - IP66

Zone: 1 - 2 - 21 - 22

LFEE

GRP Ex ed Emergency Lighting Fixtures

Emergency fluorescent lighting fixture is based on LFE model. The emergency unit allows two possible operation modes: "normal+emergency" or "only emergency". The fixture "only emergency" model is available with diffuser showing different indications (EXIT, arrows, warnings, etc.)

Material: GRP - glass reinforced polyester

Protection: II 2GD - Ex d e mb q IIC - Ex tb IIIC - IP66

Zone: 1 - 2 - 21 - 22



LFN S

Stainless Steel Ex nA Fluorescent Lighting Fixtures

Fluorescent lighting fixture available with single and double tube configuration and three sizes: 18W, 36W and 58W. The entries present on each side allows any loop-in loop-out installation.

Material: stainless steel AISI 304

Protection: II 3GD - Ex nA II - Ex tc IIIC - IP66

Zone: 2 - 22



LFN P

GRP Ex nA Fluorescent Lighting Fixtures

Fluorescent lighting fixture available with single and double tube configuration and three sizes: 18W, 36W and 58W. The entries present on each side allows any loop-in loop-out installation.

Material: GRP - glass reinforced polyester

Protection: II 3GD - Ex nA II - Ex tc IIIC - IP66

Zone: 2 - 22





CG

Metal Ex d - e Cable Glands for unarmoured cables

Cable glands are normally used to connect Ex d and Ex e enclosures using non-armoured cables. Available from 3/8" to 4" NPT and from M16 to M110 ISO Metric threads. The modular gasket covering the different cable sizes facilitates the installation work. Protective shroud and earth tag are available upon request.
Material: **brass - nickel-plated brass - stainless steel AISI 316**
Protection: **II 2GD - Ex d IIC - Ex e IIC - Ex tb IIIC - IP66/68**
Zone: **1 - 2 - 21 - 22**

CGA

Metal Ex d - e Cable Glands for armoured cables

Cable glands are normally used to connect Ex d, Ex e enclosures using armoured cables. Available from 3/8" to 3" NPT and from M16 to M90 ISO Metric threads. The simplified internal connection system facilitates the installation work. Protective shroud and earth tag are available upon request.
Material: **brass - nickel-plated brass - stainless steel AISI 316**
Protection: **II 2GD - Ex d IIC - Ex e IIC - Ex tb IIIC - IP66/68**
Zone: **1 - 2 - 21 - 22**



CGF

Metal Ex d - e Cable Glands for unarmoured cables

Cable glands are normally used to connect Ex d, Ex e and Ex i enclosures using non-armoured cables protected by a rigid or a flexible conduit directly connected on its female hub. Available from 3/8" to 4" NPT and from M16 to M110 ISO Metric threads. The modular gasket covering the different cable sizes facilitates the installation work.
Material: **brass - nickel-plated brass - stainless steel AISI 316**
Protection: **II 2GD - Ex d IIC - Ex e IIC - Ex tb IIIC - IP66/68**
Zone: **1 - 2 - 21 - 22**



CGP

Polyamide Ex e - i Cable Glands for unarmoured cables

Cable glands are normally used to connect Ex e and Ex i enclosures using non-armoured cables. Available from M16 to M63 ISO Metric threads. The cable glands for Ex i installation can be supplied with light blue cap.
Material: **polyamide 6**
Protection: **II 2GD - Ex e IIC - Ex tb IIIC - IP66/68**
Zone: **1 - 2 - 21 - 22**



CGI - CGL - CGV

Metal Ex d - e Cable Glands for unarmoured cables

Cable glands are normally used to connect Ex d, Ex e and Ex i enclosures using non-armoured cables protected by a water-tight flexible conduit directly connected on its female hub with different angulations. Available from 3/8" to 1" 1/2 NPT and from M16 to M50 ISO Metric threads. The modular gasket covering the different cable sizes facilitate the installation work.
Material: **brass - nickel-plated brass - stainless steel AISI 316**
Protection: **II 2GD - Ex d IIC - Ex e IIC - Ex tb IIIC - IP66/68**
Zone: **1 - 2 - 21 - 22**





SND - SBD

Metal Ex d - e Sealed Nipples & Sealed Bushings

Sealing nipples and bushings are used to connect Ex d and Ex e enclosures with single-core cables of different types and sizes. Cables are factory-sealed on specific client's request.

Material: **galvanized steel - stainless steel - brass - nickel-plated brass**

Protection: **II 2GD - Ex d IIC - Ex e IIC - Ex tb IIIC - IP66**

Zone: **1 - 2 - 21 - 22**

BMF-FF-MM/RMF-FF-MM

Galvanized / Stainless steel Ex d three-pieces unions

The three-piece unions are designed to allow the connection between conduit equipment and enclosures thanks to the independent rotation of their ends. Available with a male or female threads from 1/2" to 4" NPT and from M20 to M110 ISO Metric threads.

Metric threaded unions are provided with internal locknut and gasket .

Material: **galvanized steel - stainless steel AISI 316**

Protection: **II 2GD - Ex d IIB / IIC - Ex tb IIIC - IP66**

Zone: **1 - 2 - 21 - 22**



PL - RA

Metal Ex d - e Plugs & Adaptors

A complete range of plugs, used for closing unused plugs and adaptors used to provide means of connection between male and/or female hubs with different type and size of thread.

Available from 1/4" to 4" NPT and from M12 to M110 ISO Metric threads.

Plugs and adaptors with other threads are available upon request.

Material: **brass - nickel-plated brass - galvanized steel - stainless steel AISI 316**

Protection: **II 2GD - Ex d IIC - Ex e IIC - Ex tb IIIC - IP66/68**

Zone: **1 - 2 - 21 - 22**

FC - RC

Metal Ex d Flexible & Rigid Conduits

When requesting an additional mechanical protection to cabling connection, it is available in complete range of flexible and rigid conduits with different threads suitable for any kind of application. For rigid conduits installation , it is available in complete range of fixing accessories such as clamps, u-bolts, saddles, etc.

Material: **galvanized steel - stainless steel**

Protection: **II 2GD - Ex d IIC - Ex tb IIIC - IP66**

Zone: **1 - 2 - 21 - 22**



EYS - EZS

Ex d Sealing Fittings

Sealing fittings are used to connect Ex d enclosures with single-core cables of different types and sizes. EYS series can be used only for vertical installation while EZS series cover both vertical and horizontal connections.

Material: **marine aluminium - epoxy coated RAL 7001**

Protection: **II 2GD - Ex d IIC - Ex tb IIIC - IP66**

Zone: **1 - 2 - 21 - 22**



BS5308 - PAS5308

Multipair Instrumentation Cables

Cables designed to connect electrical instrumentation and communication systems in and around process plant in Oil&Gas, chemical and petrochemical industries, power generators and other process industries. They may also be used on intrinsically safe circuits.

These cables are not for direct connection to main supply.

Armoured cables are suitable for direct burial.

Conductor Range: 0.5 mmsq. to 1.5 mmsq.

Types:

Multipair Armoured (overall screened)

Multipair Unarmoured (overall screened)

Multipair Unarmoured (individual and overall screened)



VPL - MI

Heat-Tracing Cables

VPL heating cable maintains temperature greater than 150°C and withstands continuous exposure to 230°C power off.

Pyrotanax MI cable maintains temperature up to 600°C and withstands continuous exposure to 670°C



THERMOCOUPLE

Extension & Compensation Cables

Cables manufactured using either Polythene or high temperature resistant PVC. The maximum operating temperature for these cables is 70°C for Polythene and 105°C for PVC.

Cables are generally constructed to BS5308, for multipair cables with additional ability to either braid or armour using galvanized steel wire.

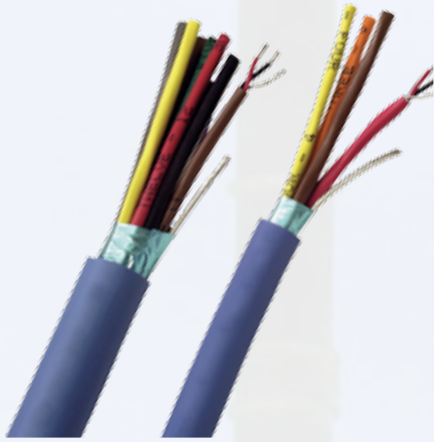
These cables can be provided unscreened or screened with either aluminium mylar tape and tinned copper drain wire or copper braided.

The thermocouples produced are types K - J - T - E extension cables and types KCB and RCA/SCA compensating cables.

The conductors are either solid or stranded as required, and are calibrated to BS4937 Pt 30.

Type: **Extension / Compensation**





ESI 09-6

Multipair & Multicore Cables

The PVC insulated multicore cables are intended for use in power stations and substations for remote operation of electrical switchgear. The Polythene insulated multipair cables are intended to provide circuits for feeder protection and for speech and data transmission. The PVC insulated multipair cables are intended for use with control, indication and alarm equipment for switchgear and similar systems.

Conductors: 1/0.8 mm. PCW , 7/0.67 mm. PCW , 1/0.9 mm. TCW

Types:

PVC Multicore

PVC Multipair Unarmoured and Armoured

Polythene Multipair Armoured

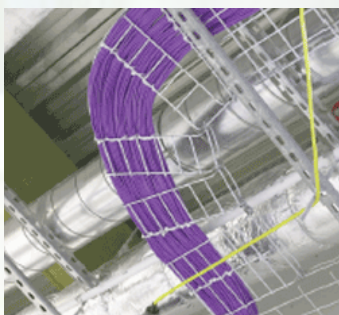
BTV - QTVR - XTV

Heat-Tracing Cables

BTV Cables provide freeze protection on metal and plastic pipes, maintaining temperature up to 65°C and withstanding exposures to 85°C.

A **QTVR** cables provide freeze protection and process temperature maintenance, maintaining and withstanding exposure temperature up to 110°C.

XTV fiber-wrap cables provide process temperature maintenance up to 120°C and withstand intermittent exposure to 215°C.



MEC

Cable Support System

Cables support system consists of straight sections and fittings designed and manufactured based on the guidelines from the Standard Publication No. VEI-1991 produced by the Cable Tray Section of the National Electrical Manufacturers Association of the USA (NEMA).

Cable support system is available as perforated or ladder cable trays.

Material: **hot dipped galvanized mild steel**

Galvanized mild steel, stainless steel, aluminium and epoxy coated finished are available upon request.